

TREES SERIES

As part of its 2025–26 season, the Weis Center will host a series of programs including performances, creative projects, walks and lectures centered on the theme of trees.

Join us!

All events are FREE except where noted with a ticket icon. 

Tickets: [Bucknell.edu/BoxOffice](https://bucknell.edu/BoxOffice) or 570-577-1000

Aug. 27 through Dec. 7 ART EXHIBITION: Gina Siepel: To Understand a Tree

Interdisciplinary artist, designer, and woodworker Gina Siepel spent 6 years studying a single tree in its forested habitat. Bridging art, ecology, and the queer experience, the project rethinks wood as material and living being, challenging binaries and inviting reflection on forest interconnection, environmental responsibility, and the power of community.

Samek Art Museum, Elaine Langone Center (ELC), Third Floor



Thursday,
Sept. 4,
4:30 p.m.

Tree Talk: Botanical Sexism: Does Planting Male Trees Mean More Allergies?

Dr. Chris Martine, Biology, will talk about plant reproduction, the basic idea being that people, to avoid the mess of fruits, have planted more male trees, which has meant more pollen. But the story isn't as simple (nor accurate).

Samek Art Museum, Elaine Langone Center (ELC), Third Floor



Thursday,
Sept. 11,
4:30 p.m.

Tree Flower Essences: Nature's Healing

Greenhouse Caretaker, Tasha Hall, will share recipes for floral essences of trees and their effects on the physical and emotional body.

Samek Art Museum, Elaine Langone Center (ELC), Third Floor



Thursday,
Sept. 18,
4:30 p.m.

Rooted in Resilience: Life as an Orchardist

Business Manager at Dries Orchard in Sunbury, John Bzdil will lead a conversation about maintaining orchards, from apple varieties to the challenge of finding field workers.

Samek Art Museum, Elaine Langone Center (ELC), Third Floor

WEIS CENTER
FOR THE PERFORMING ARTS

TREES SERIES

FALL 2025

We invite you to share a creative expression of your favorite tree — a leafy companion that has rooted itself in your memory, your backyard, or your imagination.

Tell us about a tree that has meaning in your life — whether it sheltered you, inspired you, or simply made you pause and look up. Does your tree feed you? Or burst with beautiful blossoms in the spring? Is it a good listener?

Accepting pics, short videos, selfies, tree art, poems — use your imagination!

Submit by email to: WeisCntr@bucknell.edu



MORE TO COME IN SPRING 2026 —

stay tuned!

go.bucknell.edu/TreesSeries





Wednesday,
SEPT. 24,
7:30 p.m.



PERFORMANCE: Andre Mehmar Trio (Jazz/World Music)

Pianist and composer Andre Mehmar's trio blends Brazilian roots with jazz and classical influences in a new nature-inspired repertoire shaped by his life in the Atlantic Forest.

Weis Center Atrium



TREE TALK

Thursday,
SEPT. 25,
4:30 p.m.

Hand-Carved Wooden Spoons and the Slöjd Tradition

Bucknell L&IT Staff member Wade Hutchison will discuss the craft of woodworking and will demonstrate spoon carving.

Samek Art Museum, Elaine Langone Center (ELC), Third Floor

Monday,
SEPT. 29,
7 p.m.

ARTIST TALK: Gina Siepel

Join the Samek Art Museum for an engaging interview as Margaret Cronin from Bucknell University speaks with Gina Siepel, the artist behind the *To Understand A Tree* exhibition. They will explore the ancient relationship between humans, trees, and forests, discussing how this connection can be deepened and transformed in today's era. A reception will follow.

Samek Art Museum, Elaine Langone Center (ELC), Third Floor

Tuesday,
SEPT. 30,
7:30 p.m.



MULTIMEDIA: National Geographic Live: From Roots to Canopy

National Geographic Explorer at Large Nalini Nadkarni interweaves her research on rainforest canopy habitat with dazzling imagery.

Weis Center



TREE TALK

Thursday,
OCT. 2,
4:30 p.m.

"Battle of the Trees" and Other Ancient Tree Lore

Local folk historian and storyteller Fiona Powell will recount ancient Celtic stories.

Samek Art Museum, Elaine Langone Center (ELC), Third Floor



TREE TALK

Thursday,
OCT. 9,
4:30 p.m.

Deceptively Resilient: The Dangerous Romance of Trees

Dr. Claire Campbell, History, will chronicle North American ideas about forests.

Samek Art Museum, Elaine Langone Center (ELC), Third Floor



TREE TALK

Thursday,
OCT. 16,
4:30 p.m.

Violins: Crafting Sound from Nature

John Lantz, luthier at JR Violins, discusses types of woods used in instrument building.

Samek Art Museum, Elaine Langone Center (ELC), Third Floor

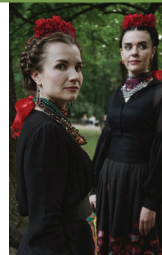
Friday,
OCT. 17,
4:30 p.m.



PERFORMANCE: Kurbasy (World Music/Ukraine)

Kurbasy channels contemporary connections to folk songs and lullabies of the past with its time-bending "Songs of the Ukrainian Forest" in a multimedia performance.

Weis Center



Tuesday,
OCT. 21,
7:30 p.m.



PERFORMANCE: Nrityagram Dance Ensemble (Classical Indian Dance)

Nrityagram was founded as a school devoted to Indian dance. They will perform KHANKHANĀ: The Sound of Dancing Feet with live music.

Weis Center



TREE TALK

Thursday,
OCT. 23,
4:30 p.m.

Harvest to Heat: Biomass Energy and the Case for Sustainable Forestry

Michael Palko, former PA forester, will talk about his experience using trees as a fuel source in schools and hospitals and forest regeneration.

Samek Art Museum, Elaine Langone Center (ELC), Third Floor

Tuesday,
OCT. 28,
7 p.m.

STUDENT FILMS

Bucknell Film Club presents their 24-Hour Film Challenge at the Campus Theatre! After receiving their tree-related prompt, each group has 24 hours to plan, film, and edit a short film.

Campus Theatre, Downtown Lewisburg



TREE TALK

Thursday,
OCT. 30,
4:30 p.m.

Listening to A Rainforest

Dr. Tyler Yamin, Music, will share findings from his doctoral work which focused on the sounds of gibbons in the forests of Borneo.

Samek Art Museum, Elaine Langone Center (ELC), Third Floor



TREE TALK

Thursday,
NOV. 6,
4:30 p.m.

The Religious Life of Trees

Dr. John Penniman, Religious Studies, will explore the significance of trees within multiple religious traditions, with an emphasis on the central role that trees have played in myths, rituals, and ethics.

We will discuss how trees have shaped cultural worldviews and, in turn, how these worldviews affect the meaning humans make of trees.

Samek Art Museum, Elaine Langone Center (ELC), Third Floor



TREE TALK

Thursday,
NOV. 13,
4:30 p.m.

A Shade Tree Commission's Role in Urban Forestry

Local Shade Tree Commission volunteer, Amy Levan, talks about the importance of urban trees.

Samek Art Museum, Elaine Langone Center (ELC), Third Floor

Thursday,
NOV. 13,
7:30 p.m.



PERFORMANCE: Charly Lowry (Folk/Americana)

Charly Lowry, an Indigenous singer-songwriter from Pembroke, N.C., blends powerful vocals with advocacy for underserved communities.

Weis Center



TREE TALK

Thursday,
NOV. 20,
4:30 p.m.

The Poetics of Trees: Spiritual Symbolism in Biblical and early Celtic and Germanic poetry, alongside Tolkien's Ents and Bucknell's Native Tree of Peace

Rev. Fr. Paul Siewers is Associate Professor of English Literary Studies and will present an academic talk that includes Tolkien's Ents.

Samek Art Museum, Elaine Langone Center (ELC), Third Floor

Monday,
DEC. 1,
7 p.m.

CRANKIEFEST

This inaugural Crankiefest will feature several original moving panoramas with tree-inspired themes, all created and performed by Bucknell students.

Weis Center Atrium



TREE TALK

Thursday,
DEC. 4,
4:30 p.m.

Leaf Them Be: Simple Landscape Restoration Projects

Olyssa Starry, Program Director at the BCSE, will share results from the *Leaf It Be* project and the importance of fallen leaves to soil health.

Samek Art Museum, Elaine Langone Center (ELC), Third Floor